

THE BLUEPRINT

TO IMPACT CAREER GROWTH

“

IT
TAKES
STRATEGIC
VISION
TO
LEAD



ABOUT CIMA

The Chartered Institute of Management Accountants® (CIMA®), founded in 1919, is the world's leading and largest professional body of management accountants. In 2017, together with the American Institute of CPAs®, it formed the Association of International Certified Professional Accountants® (the Association) to serve the needs of public and management accountants worldwide.

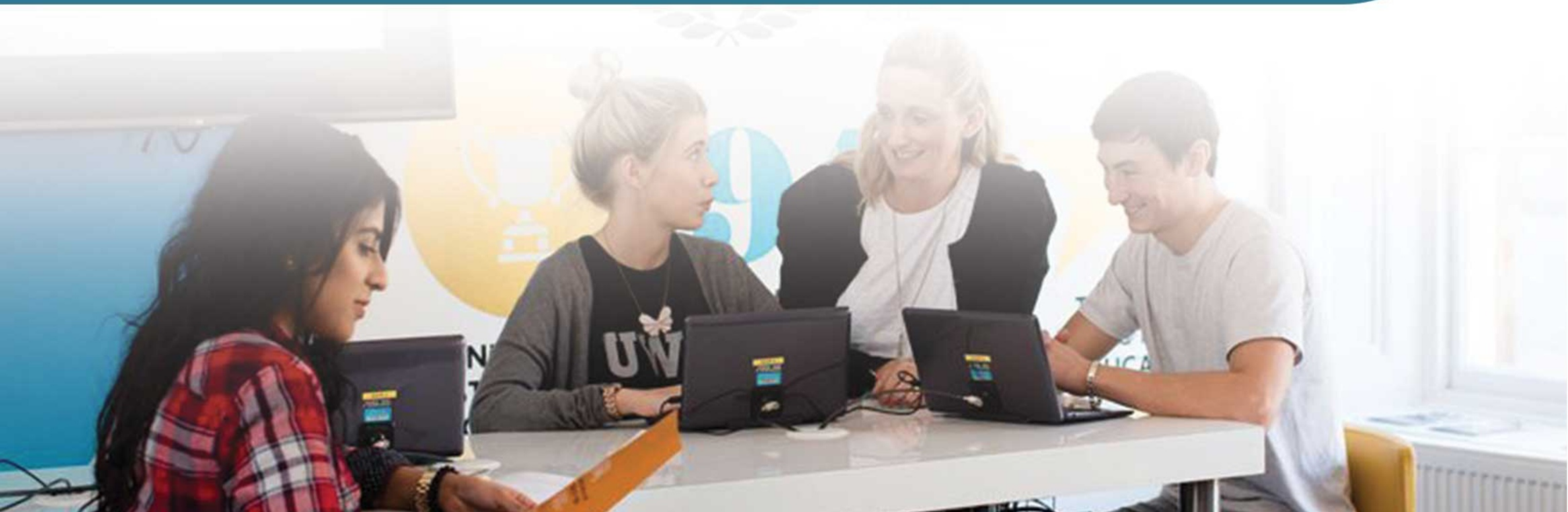
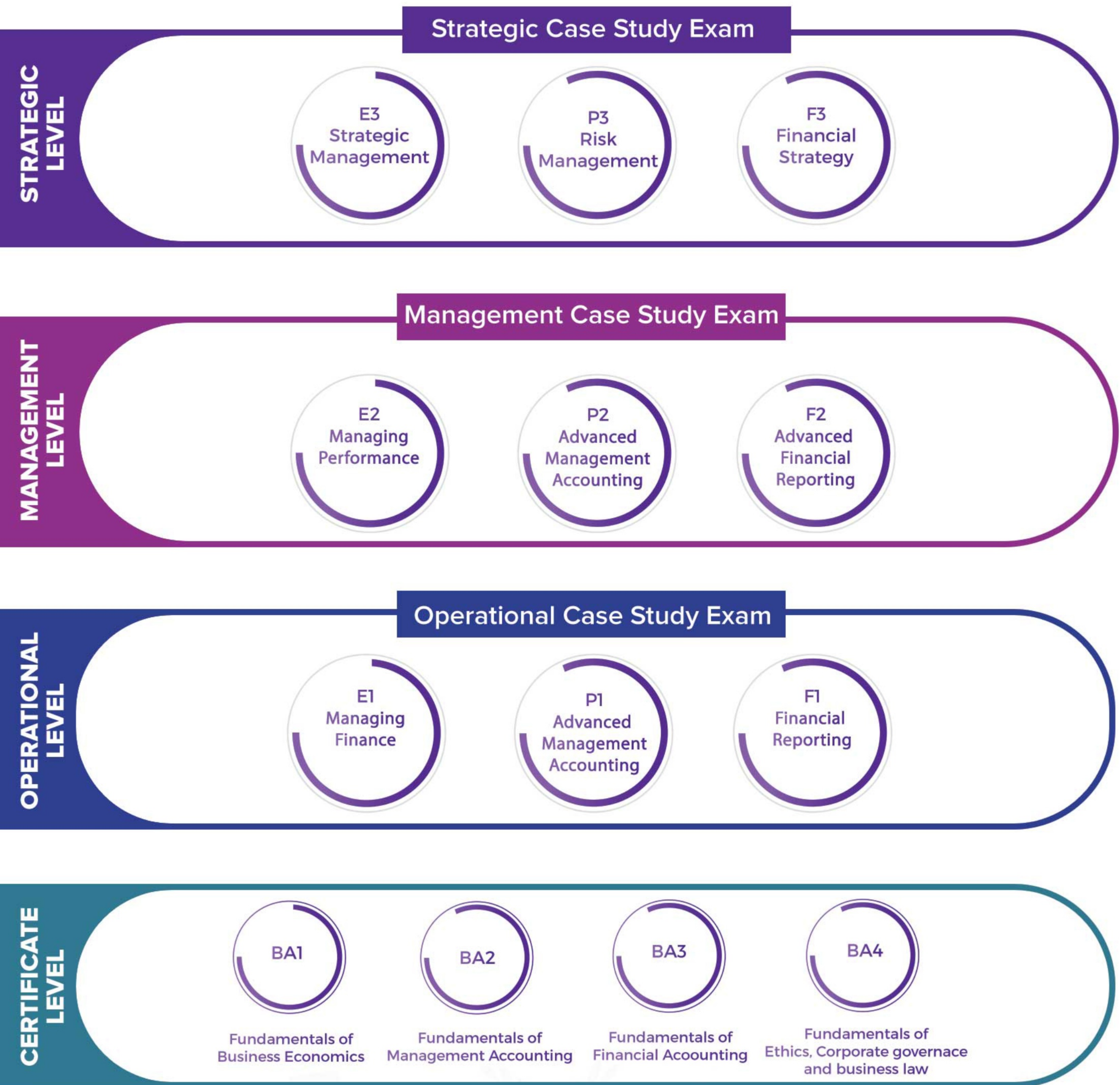
Through this joint venture, we provide continuing professional development services, fund academic research, develop thought leadership, monitor professional standards, maintain a code of ethics for members, and work with external tuition providers and assessment services to provide the best study and examination experience.

CIMA and the Association also work closely with employers and sponsors leading-edge research, constantly updating its professional qualification and professional experience requirements to ensure it remains the employer's choice when recruiting financially trained business leaders.

The Association combines the strengths of the American Institute of CPAs and CIMA. The Association, with AICPA & CIMA, empowers the world's most highly-skilled accountants – CPAs and CGMA designation holders – with the knowledge, insight and foresight to meet today's demands and tomorrow's challenges.



CIMA SYLLABUS STRUCTURE





AICPA & CIMA

CGMA FLP University Partner

INTRODUCING THE ALTERNATIVE PATH
TO COMPLETE CIMA

THE CGMA FINANCE LEADERSHIP PROGRAMME

Entry routes



3 EXAMS
9 ASSESSMENTS
TO QUALIFY CIMA

- BA/BSC
Business management/ administration/ economics degree holders
- General MBA / Masters in project management
- Pearson HND
- Higher National Diploma in Accountancy (4-year full time)
- CIMA Certificate level
- AAT passed finalists



2 EXAMS
6 ASSESSMENTS
TO QUALIFY CIMA

- MBA/BA/BSC
Accounting & finance
- CIMA operational level



1 EXAM
3 ASSESSMENTS
TO QUALIFY CIMA

- ACCA Members
- CIMA management level
- Associate Member of IFA-UK /
Associate member of IPA Australia



CGMA FINANCE LEADERSHIP PROGRAMME STRUCTURE



3
CASE STUDIES
9 Assessments
to Qualify CIMA



LEADERS POWERED BY CGMA



Nalin Karunaratne, FCMA, CGMA,
Director/CEO of Ceylon Biscuits Limited and
CBL Exports on being appointed as the
Independent Non- Executive Director Orient
Finance PLC.



Mahesha Amarasuriya, FCMA, CGMA on being
appointed to The Association of International
Certified Professional Accountants MESANA
Regional Advisory Panel



Damith Pallewatte ACMA, CGMA, Vice Chair
of the CIMA Sri Lanka Country Network
Committee, on being appointed as the
Chairman of Lanka Ventures PLC and LVL
Energy Fund PLC.



Dr.Sajeewa Narangoda FCMA, CGMA, BDS (SL),
CPA (Aus.), MSc (UK), Group Vice President of
Ambeon Holdings PLC and Executive Director
of Colombo City Holdings PLC for being
appointed as Executive Director – Ambeon
Holdings PLC and Non – Executive Director of
Dankotuwa Porcelain PLC, Millennium IT ESP
and Royal Fernwood Porcelain Limited.

UNIVERSITY OF THE
WEST of SCOTLAND
UWS

A HONS
DEGREE

INCLUSIVE OF

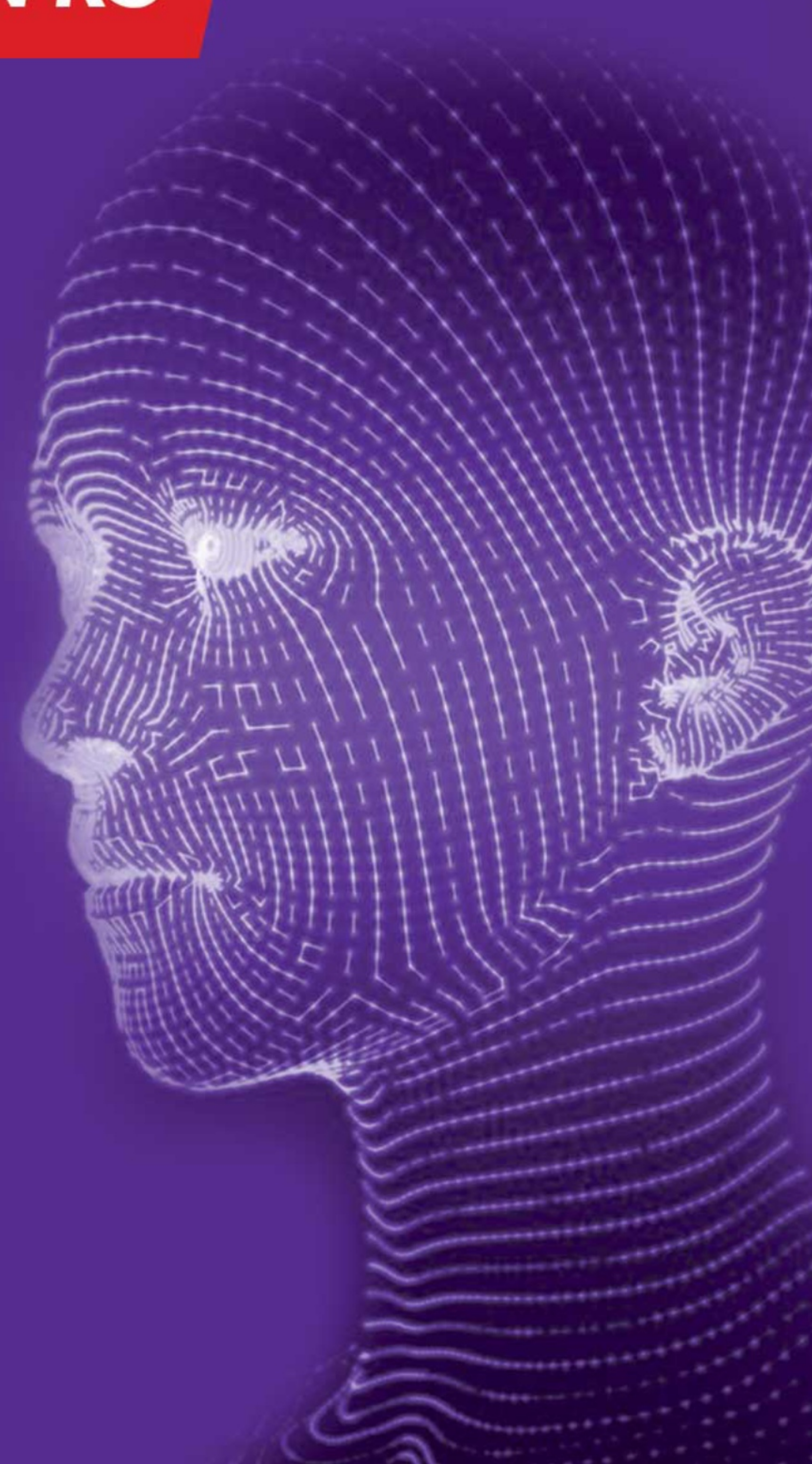


CIMA

SAVING 1 MILLION RS

Kandy Branch of Imperial College is
the **FIRST and ONLY CIMA PREMIUM
LEARNING PARTNER** in **KANDY**, with
EXCLUSIVE focus on Business
Management & Finance Studies

DEVELOP THE
MINDSET
TO RISE THROUGH DISRUPTION





DREAM BELIEVE TRANSFORM

www.icbsgroup.com

Head Office - Colombo



No 320, 1/1, Galle Road,
Colombo 3, Sri Lanka



+(94) 114 515 253
+(94) 773 918 777



Branch - Kandy

No.473, Peradeniya Road
Kandy



+(94) 814 950 950,
+(94) 773 919 777

